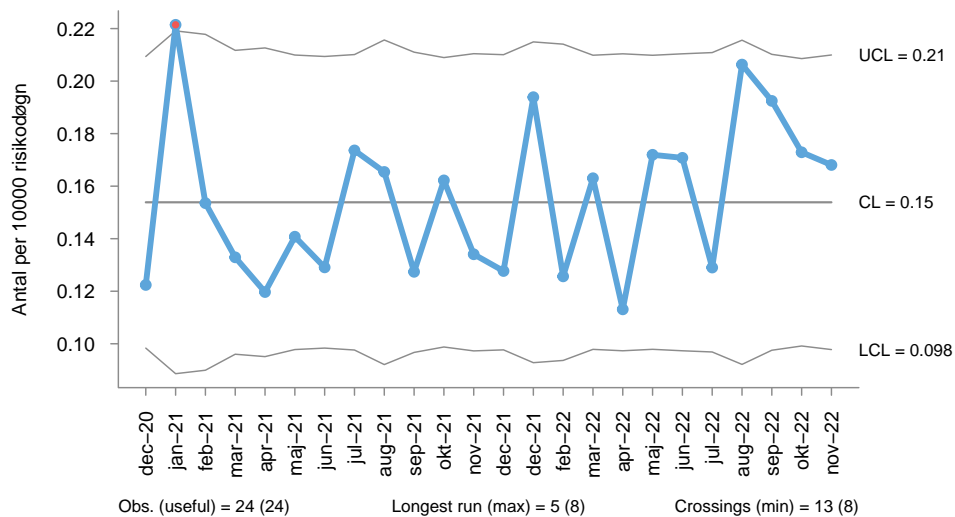


HAIBA

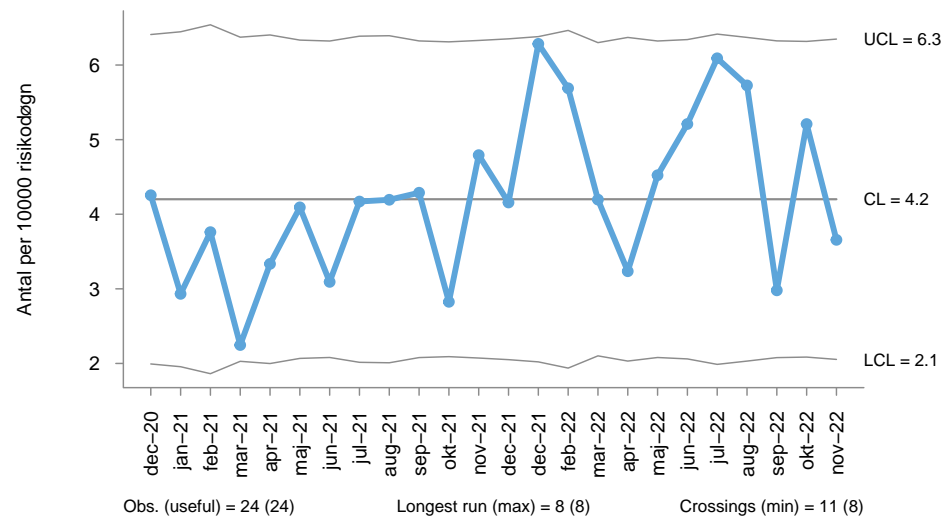
2022-12-05

Region Sjælland

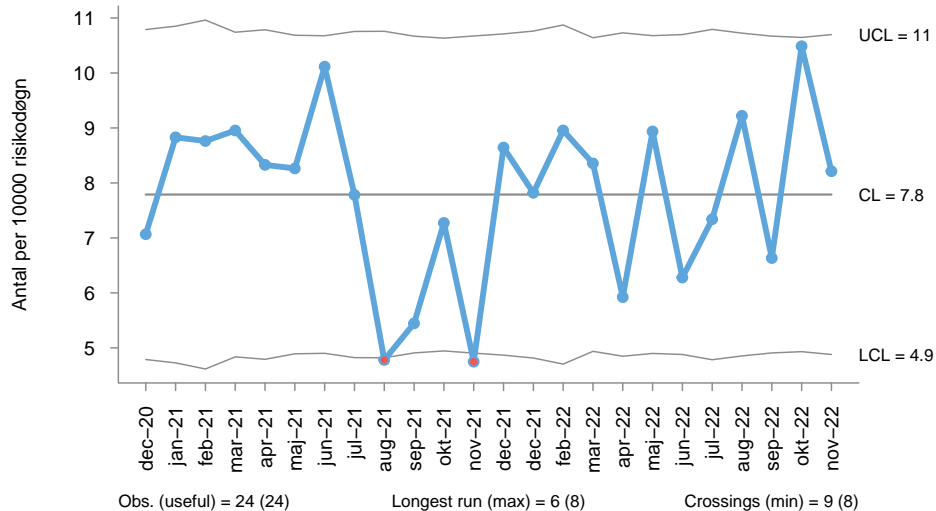
Clostridium difficile diagnose efter udskrivelse/ambulant kontakt (COHA)



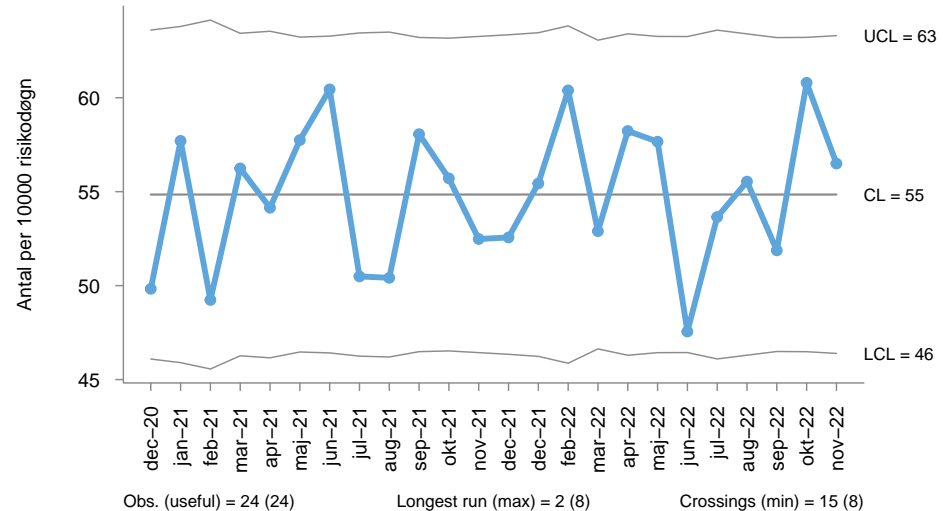
Clostridium difficile under indlæggelse (HOHA)



Bakteriæmi

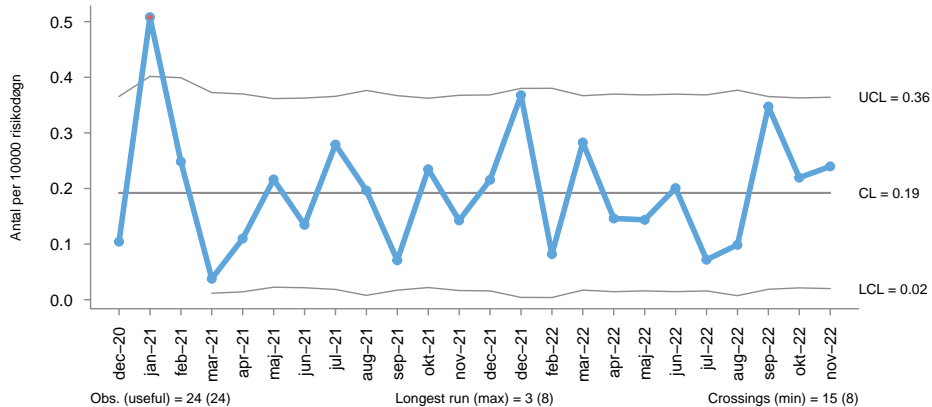


Urinvejsinfektioner

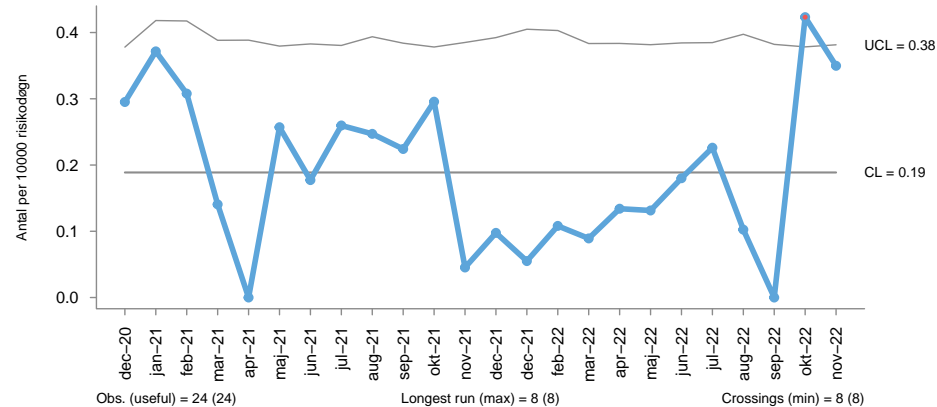


Clostridium difficile diagnose efter udskrivelse/ambulant kontakt (COHA)

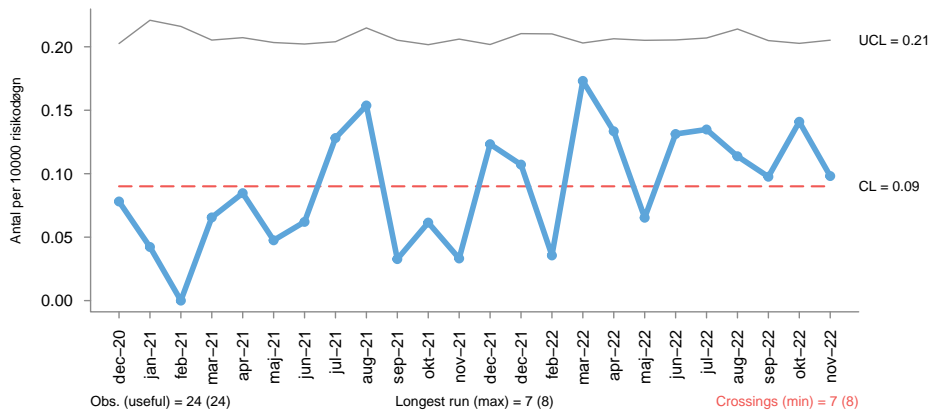
Holbæk Sygehus



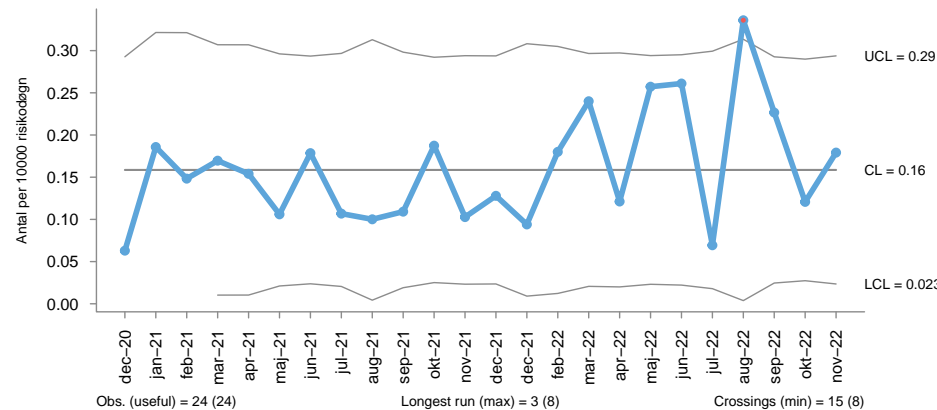
Nykøbing F. Sygehus



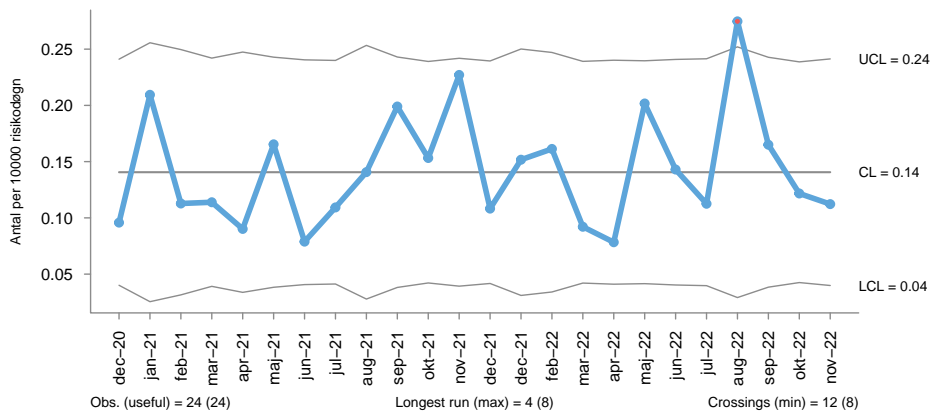
Næstved Sygehus



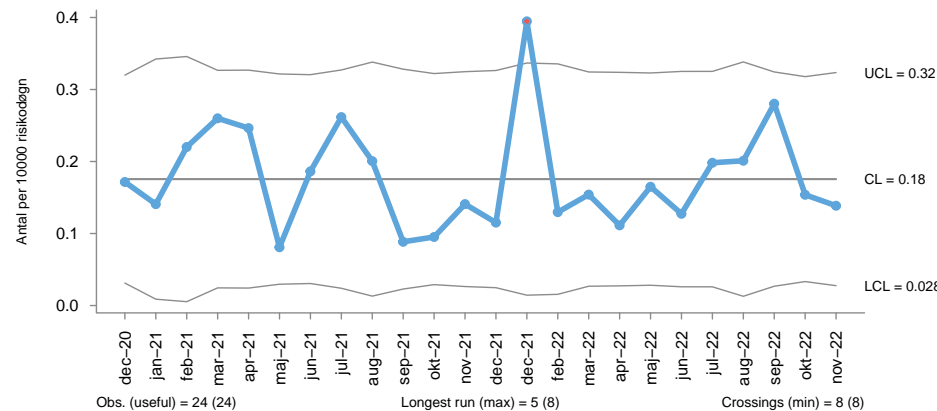
Sjællands Universitetshospital, Køge



Sjællands Universitetshospital, Roskilde



Slagelse Sygehus



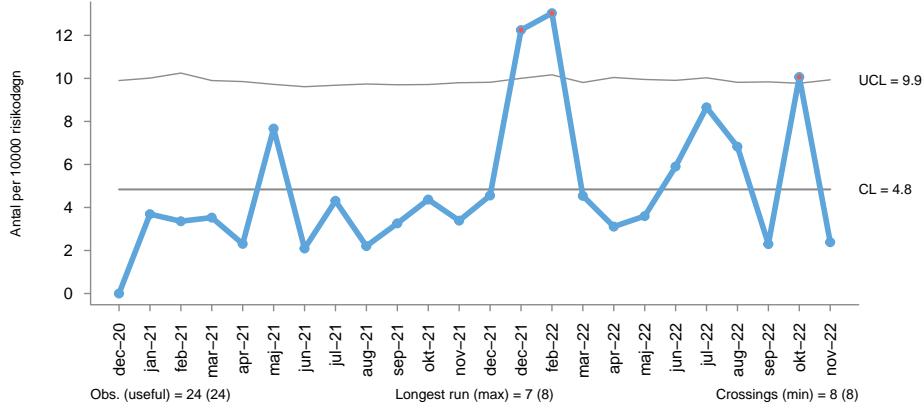
Clostridium difficile diagnose efter udskrivelse/ambulant kontakt (COHA)

Afdeling		02-22	03-22	04-22	05-22	06-22	07-22	08-22	09-22	10-22	11-22
HOL	Endokrin. Sengeafs. 42.4, HOL	0	0	0	0	0	0	0	0	0	2
	Dialyseafsnit, Hol	0	0	0	0	0	0	0	1	1	1
	Geriatrisk Sengeafs. 03.4, HOL	0	0	0	1	1	0	0	0	1	1
	Akut Afd. Skadestue, HOL	0	1	1	0	1	1	0	2	0	1
NFS	Akutaafd. Sengeafs. 2, NFS	0	0	0	0	1	1	0	0	1	1
	Gastroent. Sengeafs., NFS	0	1	1	0	1	0	0	0	1	1
	Kir. Endoskopi Amb., NFS	0	0	0	1	0	0	0	0	1	1
	Med. Gastro. Amb., Nfs	0	1	0	0	0	1	1	0	1	1
NAE	Urologisk Amb., NAE	0	0	0	1	0	0	1	1	0	1
	Klin. Onkol. Amb., NAE	1	1	2	1	0	0	1	0	0	1
	Radiologi, Nae	0	2	1	0	0	1	1	0	0	1
	Ortopædkir. Amb., Nae	0	0	0	0	0	0	0	1	1	0
KOE	Akut Afd., Skadestue, KOE	1	0	0	1	3	0	0	1	1	1
	Medicinsk Sengeafs. 3, KOE	0	0	0	1	0	0	1	1	1	1
	Kirurgisk Amb.1, KOE	0	1	0	0	0	0	1	1	0	1
	Med. Gastro IBD Amb., KOE	0	2	1	0	0	0	0	1	0	1
ROS	Hæmatologisk Amb.,ROS	1	1	2	0	1	2	5	2	1	1
	Urologisk Sengeafs. 13, ROS	0	0	0	0	1	0	1	1	1	1
	Dermatologisk Amb., Ros	0	0	0	0	0	0	1	1	0	1
	Klin. Onkol. Amb., Ros	0	1	0	2	1	0	1	1	0	1
SLA	Radiologi, Sla	1	0	0	3	0	0	1	0	1	1
	Med. Gastroent. Amb., SLA	1	0	0	0	0	0	0	2	0	1
	Geriatrisk Sengeafs. G1, SLA	0	2	0	0	0	0	0	1	0	1
	Reumatologisk Amb., SLA	0	0	0	0	0	0	1	1	0	1

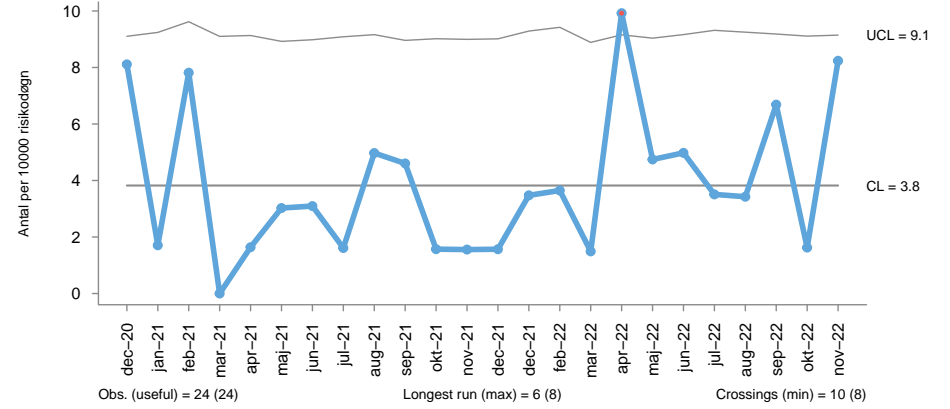
Tabellen viser kun de fire afdelinger fra hvert hospital, som har haft flest tilfælde af COHA indenfor den seneste måned.

Clostridium difficile under indlæggelse (HOHA)

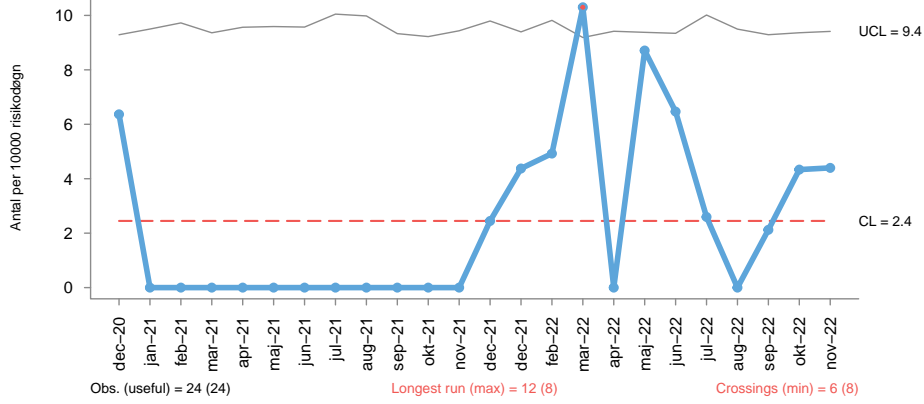
Holbæk Sygehus



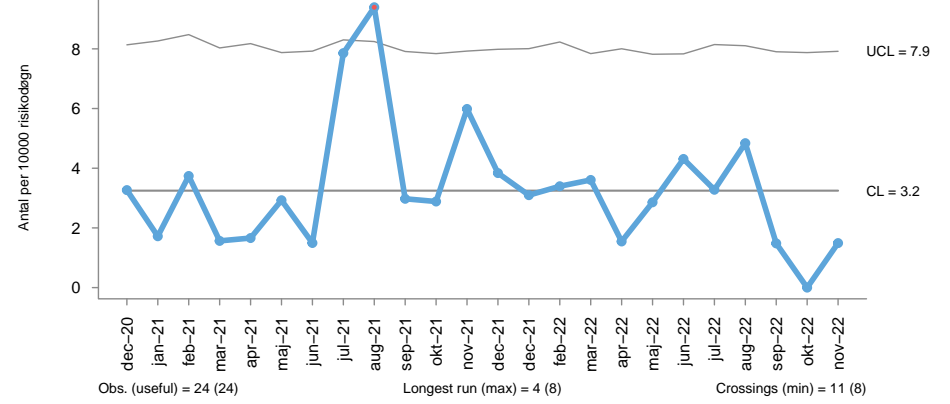
Nykøbing F. Sygehus



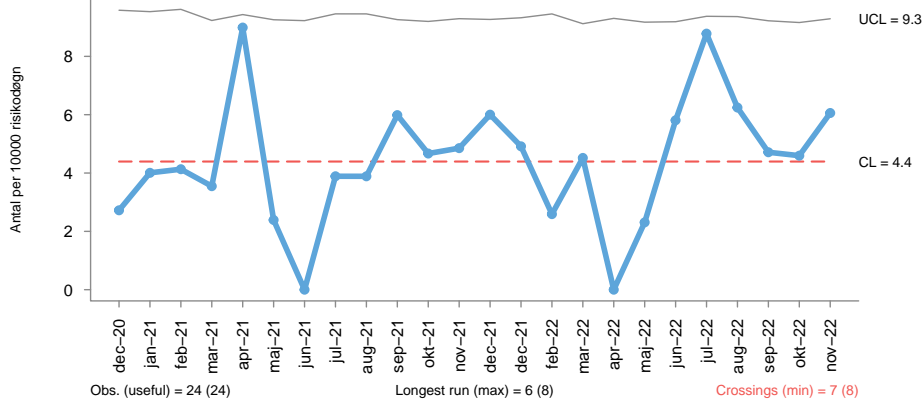
Næstved Sygehus



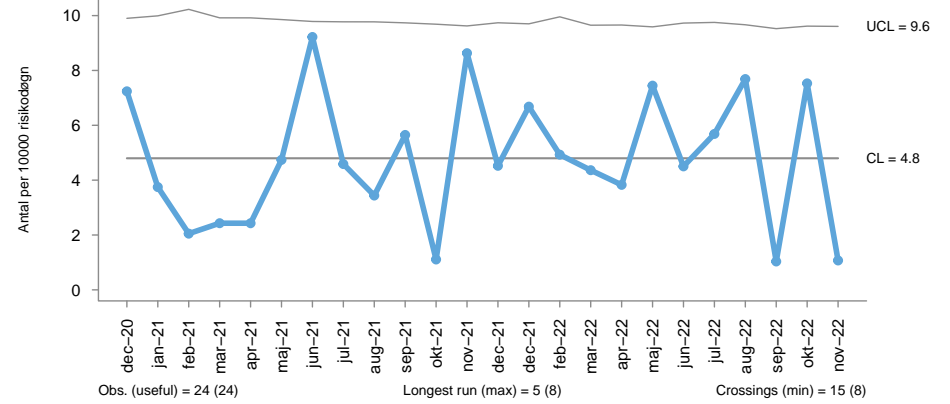
Sjællands Universitetshospital, Køge



Sjællands Universitetshospital, Roskilde



Slagelse Sygehus



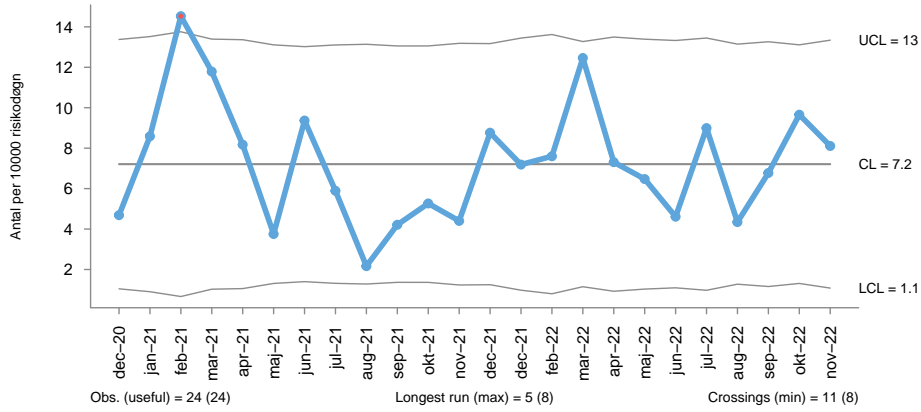
Clostridium difficile under indlæggelse (HOHA)

Afdeling		02-22	03-22	04-22	05-22	06-22	07-22	08-22	09-22	10-22	11-22
HOL	Kardiologisk Sengeafs. 43.4, HOL	0	0	0	0	1	0	0	0	1	1
	Kirurgisk Endo. Amb. 08.4, HOL	0	0	0	0	0	0	0	0	0	1
	Endokrin. Sengeafs. 42.4, HOL	0	1	0	0	0	0	0	0	2	0
	Med. Obs. Sengeafs. 42.3, HOL	2	0	1	0	1	3	0	0	2	0
NFS	Gastroent. Sengeafs., NFS	0	0	1	0	0	2	1	1	0	2
	Geriatrisk Sengeafs., NFS	0	0	0	0	1	0	0	1	0	1
	Kardiologisk Sengeafs., NFS	0	0	0	1	0	0	0	1	0	1
	Lungemed. Sengeafs., NFS	0	1	1	1	1	0	1	0	0	1
NAE	Klin. Onkol. Sengeafs. 12, NAE	0	0	0	1	0	0	0	0	0	1
	Lungemed. Sengeafs., NAE	0	0	0	0	1	0	0	0	1	0
	Aktiv Patientstøtte, EHO	0	0	0	0	0	0	0	0	0	0
	Akutfunktion, EHO	0	0	0	0	0	0	0	0	0	0
KOE	Medicinsk Sengeafs.6, KOE	0	0	0	0	2	0	1	0	0	1
	Ortopædkir. Sengeafs. 3, KOE	0	0	0	0	0	0	0	1	0	0
	Akut Afd., Skadestue, KOE	0	0	0	0	0	0	0	0	0	0
	Akut Afd. Amb., KOE	0	0	0	0	0	0	0	0	0	0
ROS	Klin. Onkol. Sengeafs., ROS	0	0	0	0	0	1	1	0	0	2
	Kardiologisk Sengeafs. 75, ROS	0	0	0	1	0	0	2	1	1	1
	Hæmatologisk Sengeafs.60, ROS	1	0	0	0	1	1	0	1	0	1
	Kardiologisk Sengeafs. 71, Ros	0	0	0	0	0	0	1	0	0	1
SLA	Geriatrisk Sengeafs. G1, SLA	1	1	1	3	1	2	0	1	2	1
	O-kir. Sengeafs., Traume, SLA	1	0	0	0	0	0	0	0	2	0
	Geriatrisk Sengeafs. G2, SLA	1	0	0	1	1	0	0	0	1	0
	Hormon-Hjerte Sengeafs., SLA	0	0	0	0	0	0	1	0	1	0

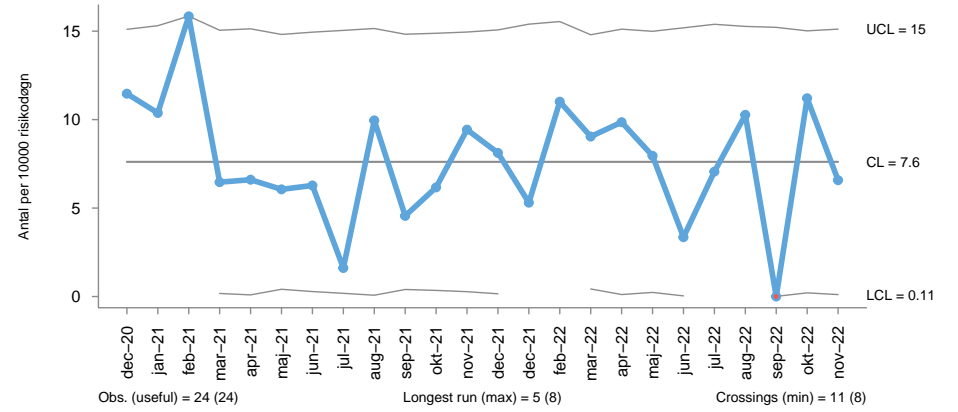
Tabellen viser kun de fire afdelinger fra hvert hospital, som har haft flest tilfælde af HOHA indenfor den seneste måned.

Bakteriæmi

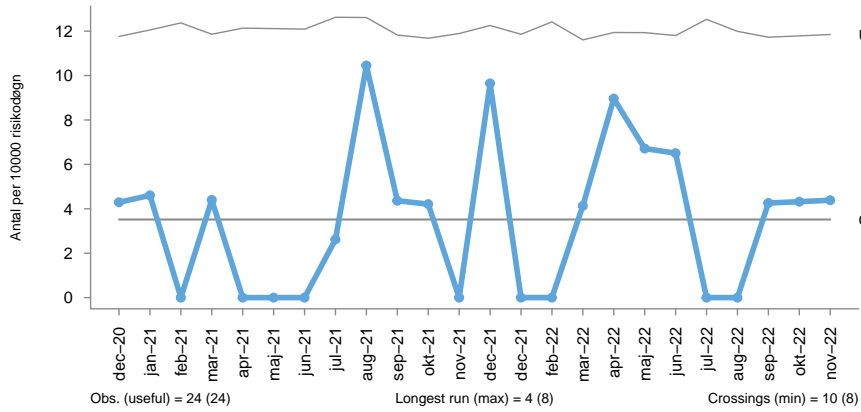
Holbæk Sygehus



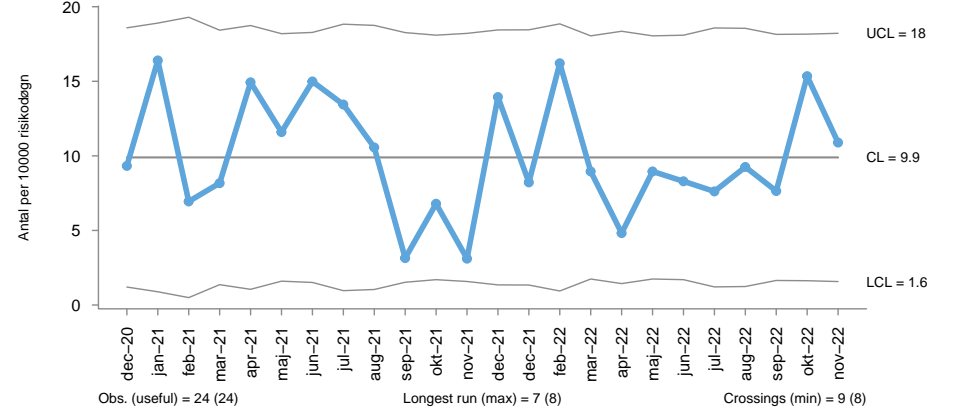
Nykøbing F. Sygehus



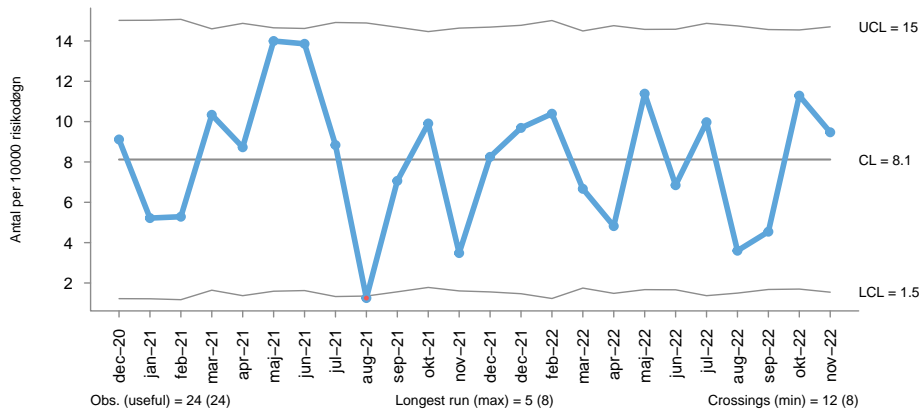
Næstved Sygehus



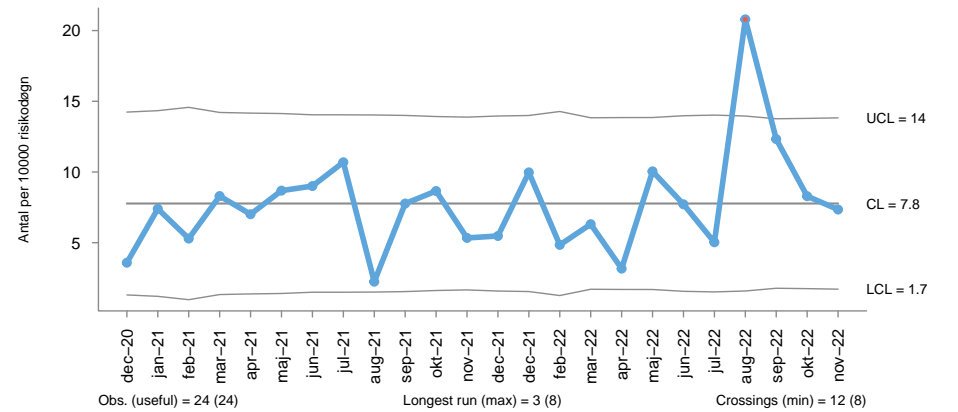
Sjællands Universitetshospital, Køge



Sjællands Universitetshospital, Roskilde



Slagelse Sygehus



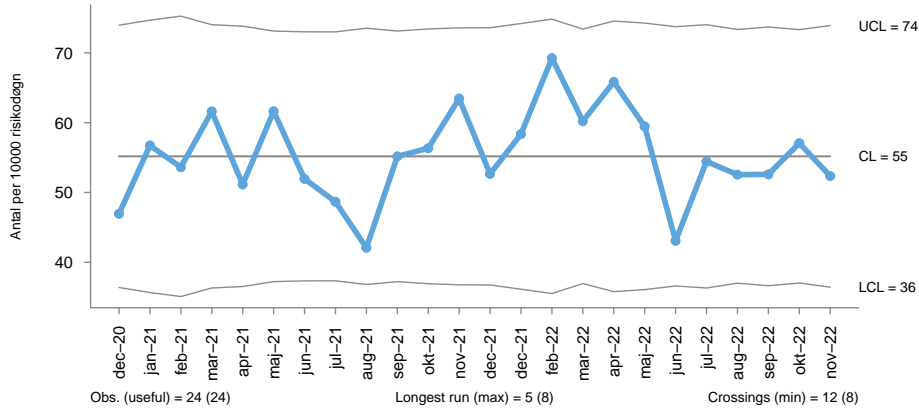
Bakteriæmi

Afdeling		02-22	03-22	04-22	05-22	06-22	07-22	08-22	09-22	10-22	11-22
HOL	Endokrin. Sengeafs. 42.4, HOL	0	1	1	0	0	0	0	0	1	2
	O-Kir. Sengeafs. 12.4, HOL	0	2	1	1	0	1	0	0	1	2
	Kardiologisk Sengeafs. 43.4, HOL	0	2	0	0	0	0	0	0	1	1
	Dialyseafsnit, Hol	0	0	0	2	0	0	0	0	0	1
NFS	Akutaafd. Sengeafs. 4, NFS	0	1	0	0	0	0	0	0	1	1
	Gastroent. Sengeafs., NFS	1	1	2	2	2	1	2	0	1	1
	Ortopædkir. Sengeafs. 1, NFS	1	0	0	0	0	0	1	0	1	1
	Intensiv Sengeafs., Nfs	1	1	0	0	0	1	1	0	0	1
NAE	Lungemed. Sengeafs., NAE	0	0	0	0	1	0	0	0	0	1
	Urologisk Amb., NAE	0	0	0	0	0	0	0	0	1	0
	Klin. Onkol. Sengeafs. 12, NAE	0	1	1	0	0	0	0	1	0	0
	Aktiv Patientstøtte, EHO	0	0	0	0	0	0	0	0	0	0
KOE	Ortopædkir. Sengeafs. 1, KOE	0	0	0	0	0	1	1	0	0	2
	Med. Gastro. Sengeafs. 2, KOE	2	1	1	0	2	0	0	0	3	1
	Ortopædkir. Sengeafs. 3, KOE	1	1	1	0	0	0	1	0	1	1
	Medicinsk Sengeafs. 3, KOE	1	1	0	1	1	0	0	2	0	1
ROS	Klin. Onkol. Sengeafs., ROS	1	2	1	2	0	1	1	0	1	3
	Hæmatologisk Sengeafs.60, ROS	0	0	2	2	3	3	0	1	0	2
	Urologisk Sengeafs. 13, ROS	1	0	0	0	1	1	0	1	0	1
	Infektionsmed. sengeafs., ROS	0	0	0	0	0	0	0	0	0	1
SLA	Geriatrisk Sengeafs. G1, SLA	1	0	0	1	0	2	0	2	0	2
	Hormon-Hjerte Sengeafs., SLA	2	2	2	0	4	0	2	2	3	1
	Kirurgisk Sengeafsnit, SLA	1	1	1	2	1	1	4	4	2	1
	Med. Gastro. Sengeafs., SLA	0	1	0	1	0	0	3	1	1	1

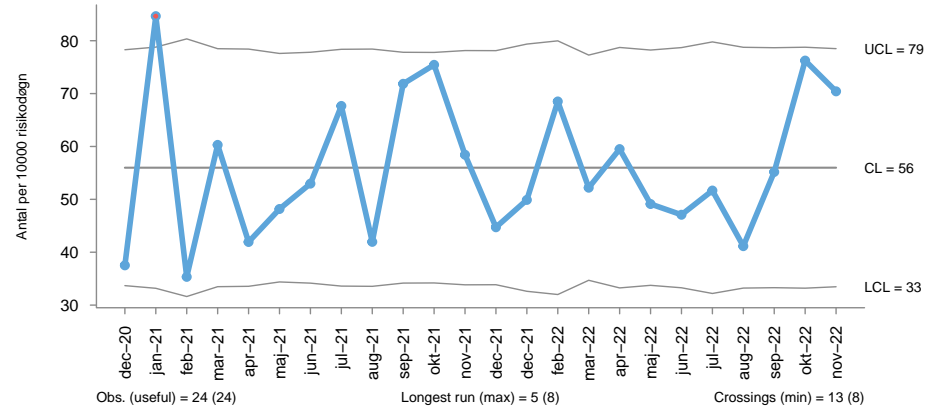
Tabellen viser kun de fire afdelinger fra hvert hospital, som har haft flest tilfælde af bakteriæmi indenfor den seneste måned.

Urinvejsinfektioner

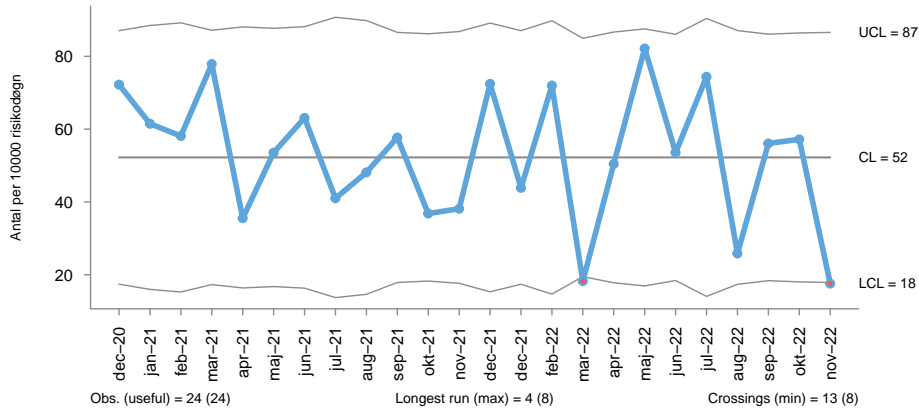
Holbæk Sygehus



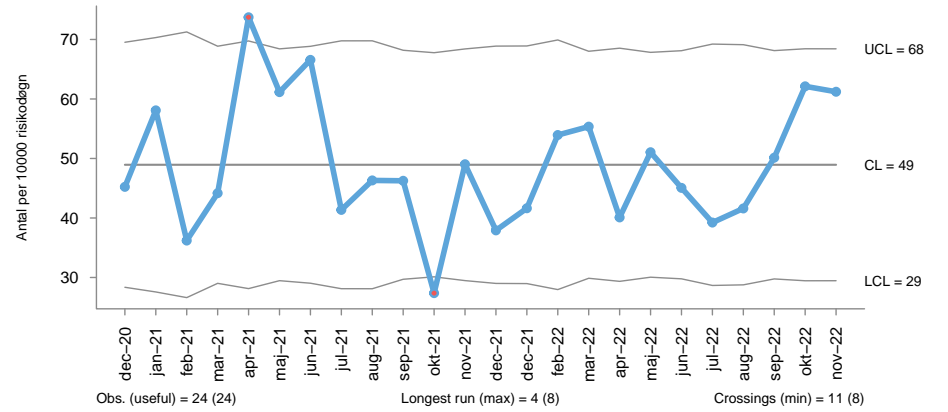
Nykøbing F. Sygehus



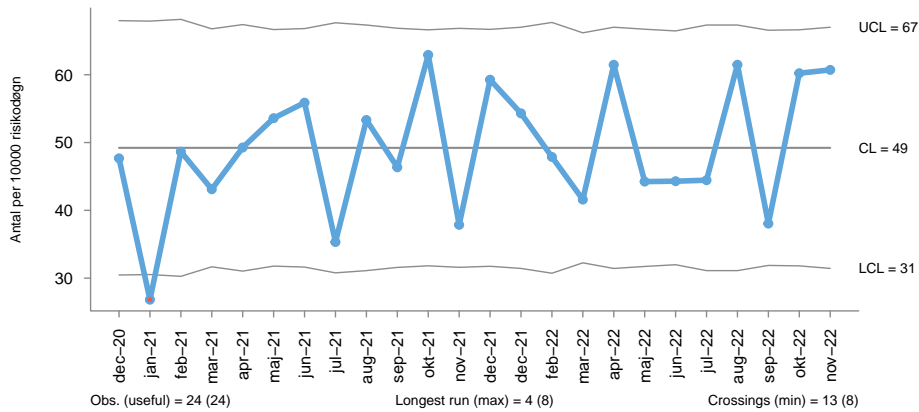
Næstved Sygehus



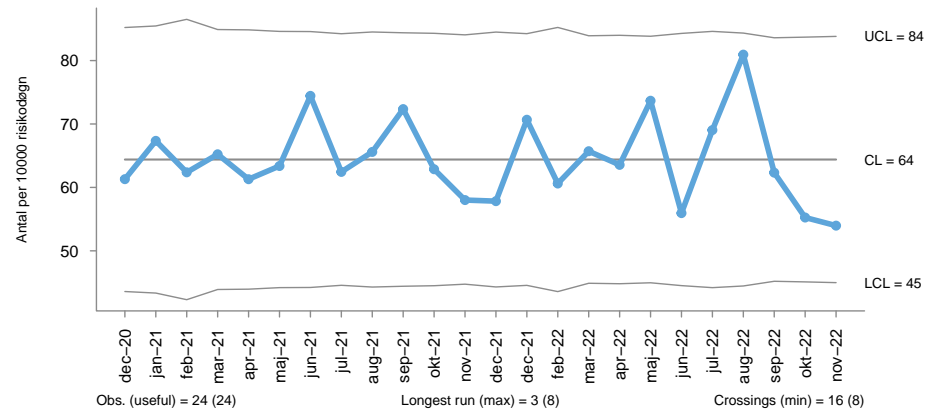
Sjællands Universitetshospital, Køge



Sjællands Universitetshospital, Roskilde



Slagelse Sygehus



Urinvejsinfektioner

Afdeling		02-22	03-22	04-22	05-22	06-22	07-22	08-22	09-22	10-22	11-22
HOL	Med. Obs. Sengeafs. 42.3, HOL	0	2	5	2	1	7	4	5	6	9
	Geriatrisk Sengeafs. 03.3, Hol	6	7	3	5	4	5	5	3	6	5
	Kardiologisk Sengeafs. 43.4, HOL	1	5	5	4	1	0	5	2	6	3
	Endokrin. Sengeafs. 42.4, HOL	1	3	2	0	0	0	1	2	4	3
NFS	Ortopædkir. Sengeafs. 1, NFS	7	7	5	3	6	3	2	4	9	10
	Gastroent. Sengeafs., NFS	5	6	7	4	3	6	6	7	4	6
	Geriatrisk Sengeafs., NFS	6	7	3	7	3	4	5	5	6	4
	Kardiologisk Sengeafs., NFS	2	3	6	3	4	1	2	2	6	4
NAE	Klin. Onkol. Sengeafs. 12, NAE	1	1	2	1	1	2	0	1	1	1
	Bronkoskopi Amb., NAE	0	0	1	0	0	0	0	0	0	1
	Lungemed. Infiltrat Amb., NAE	0	0	0	0	0	0	0	0	0	1
	Lungemed. Sengeafs., NAE	0	0	4	7	4	3	2	5	4	0
KOE	Ortopædkir. Sengeafs. 3, KOE	4	3	1	9	5	3	1	7	6	5
	Kirurgisk Sengeafs. 1, KOE	2	1	0	1	2	0	3	0	4	5
	Ortopædkir. Sengeafs. 1, KOE	2	2	3	1	1	1	3	6	1	5
	Medicinsk Sengeafs. 3, KOE	7	5	7	6	3	0	4	2	7	2
ROS	Neurovask.Center Sengeafs.,ROS	2	5	6	3	3	5	6	3	5	9
	Nefrologisk Sengeafs. 72, ROS	3	1	3	3	1	2	4	2	6	6
	Hæmatologisk Sengeafs.60, ROS	3	4	5	5	3	5	0	2	5	4
	Neurologisk Sengeafs. 61, Ros	5	7	2	3	1	6	1	2	4	4
SLA	Geriatrisk Sengeafs. G1, SLA	8	9	9	19	9	11	14	6	10	8
	O-kir. Sengeafs., Traume, SLA	3	9	5	5	7	5	5	4	2	7
	Hormon-Hjerte Sengeafs., SLA	5	8	13	3	2	3	6	3	4	6
	Neurologisk Sengeafs., SLA	3	5	3	4	4	5	5	6	3	4

Tabellen viser kun de fire afdelinger fra hvert hospital, som har haft flest tilfælde af UVI indenfor den seneste måned.