

Streptococcus pneumoniae and *Streptococcus agalactiae*

H-C Slotved

Department of Bacteria, Parasites and Fungi

Statens Serum Institut

Topics

1. Pneumococcal IPD cases in Denmark.
2. Pneumococcal susceptibility to penicillin and erythromycin.
3. Invasive streptococcal Group B (GBS) cases in Denmark.
4. GBS susceptibility to erythromycin and clindamycin.

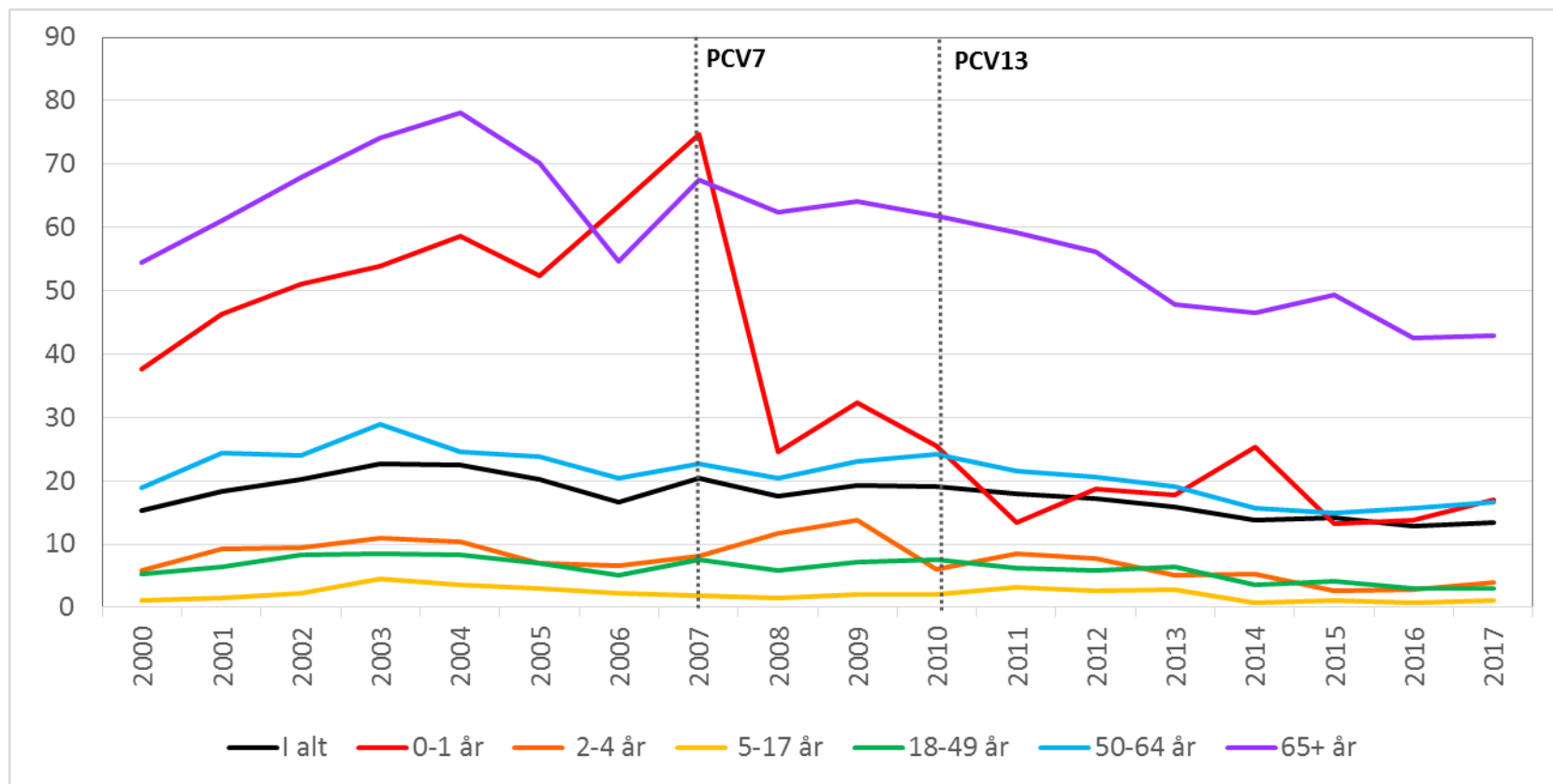


INCIDENCE OF IPD IN DENMARK FROM 2000 - 2017

Incidence of invasive pneumococcal disease by different age group, Denmark.

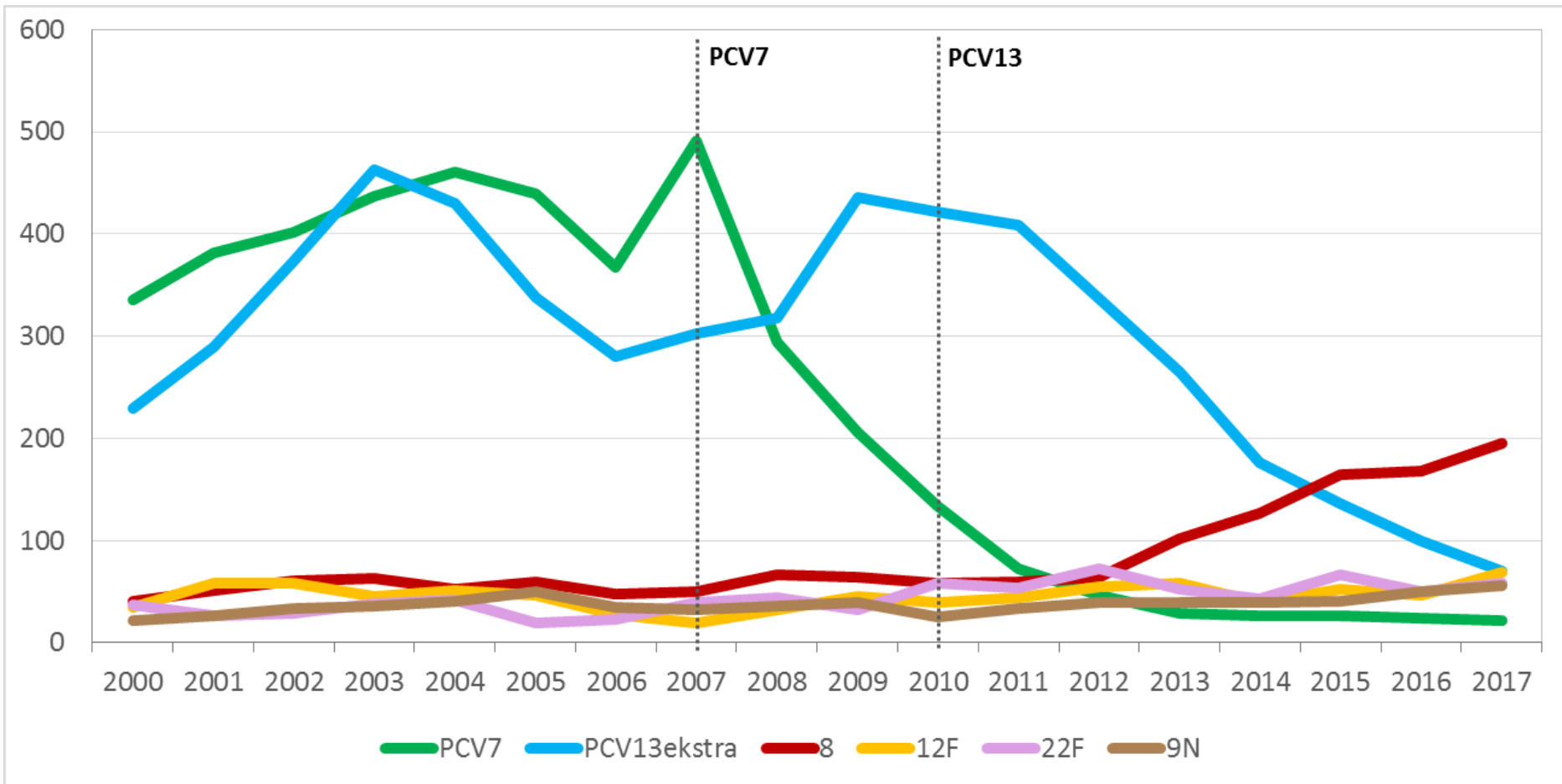
PCV-7 includes serotypes 4, 6B, 9V, 14, 18C, 19F, and 23F

PCV-13 includes additional serotypes 1, 3, 5, 6A, 7F, and 19A.



INVASIVE PNEUMOCOCCUS IN DENMARK

The serotype distribution of IPD cases in Denmark, 2000 – 2017.



DANMAP 2017 (FIGURE 8.6.1)

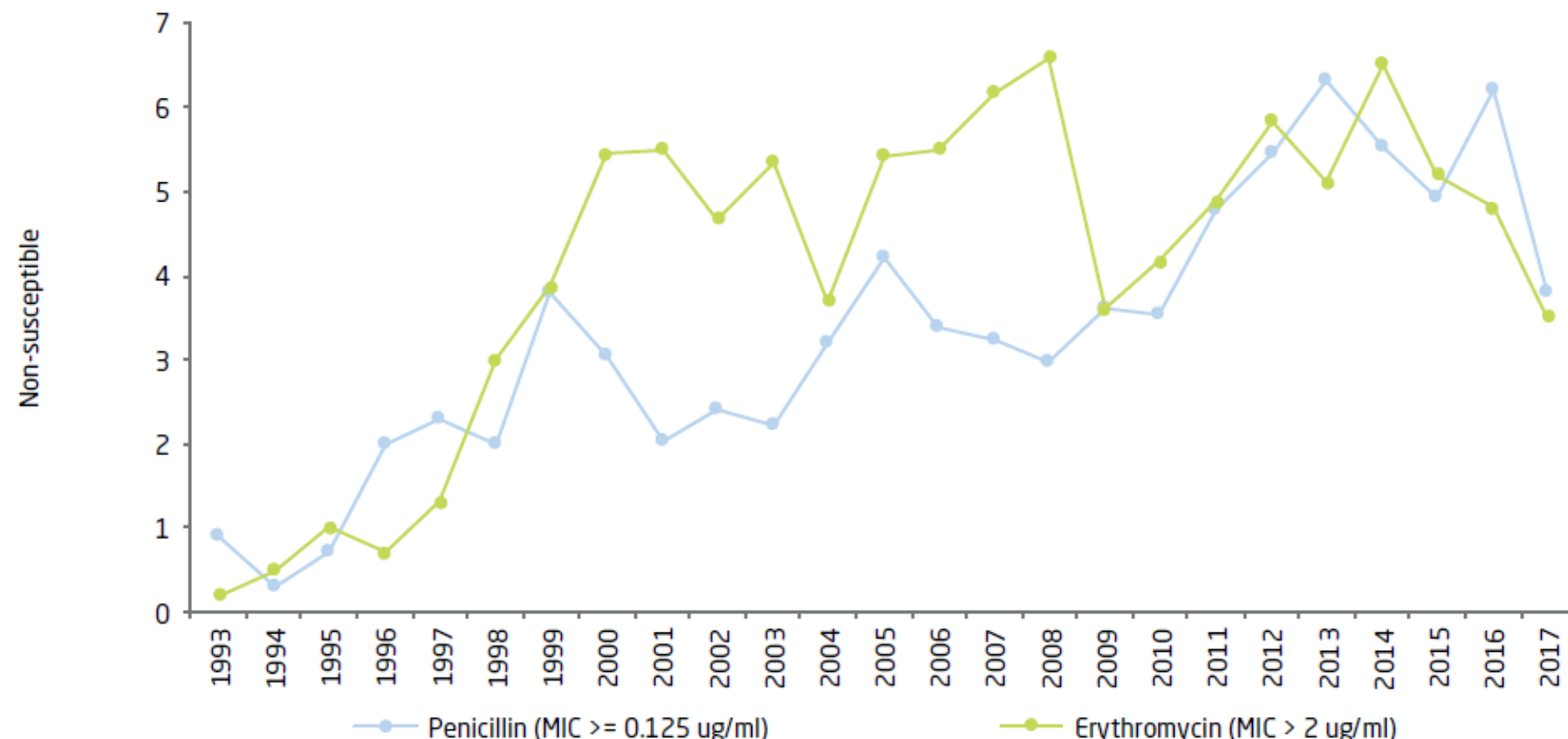
Streptococcus pneumoniae

In 2017, susceptibility testing was performed on 734 *S. pneumoniae* isolates from invasive infections (blood and spinal fluid).

3.8% (28 isolates) were penicillin non-susceptible (resistant (0)/intermediary (28)).

3.5% (26 isolates) were erythromycin non-susceptible.

Figure 8.6.1 Non-susceptibility (%) in *Streptococcus pneumoniae* blood and spinal fluid isolates from humans, Denmark DANMAP 2017



Thank you

- Tine Dalby
 - Kurt Fuursted
 - Steen Hoffmann
 - Kirsten Burmeister
 - Monja Hammer
 - Lasse Schwartz
- We acknowledge the Danish Departments of Clinical Microbiology for submitting invasive isolates for national surveillance.