

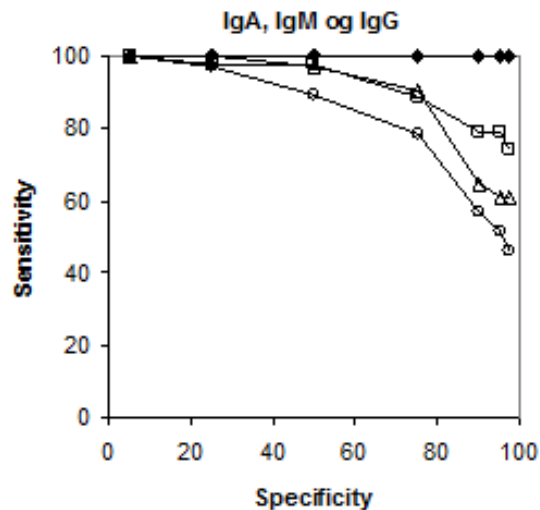


YERSINIA ENTEROCOLITICA SEROLOGI

Karen A Krogfelt ,PhD
MI og MDV



- In house ELISA baseret på LPS O3
- Testes for IgG, IgA og IgM

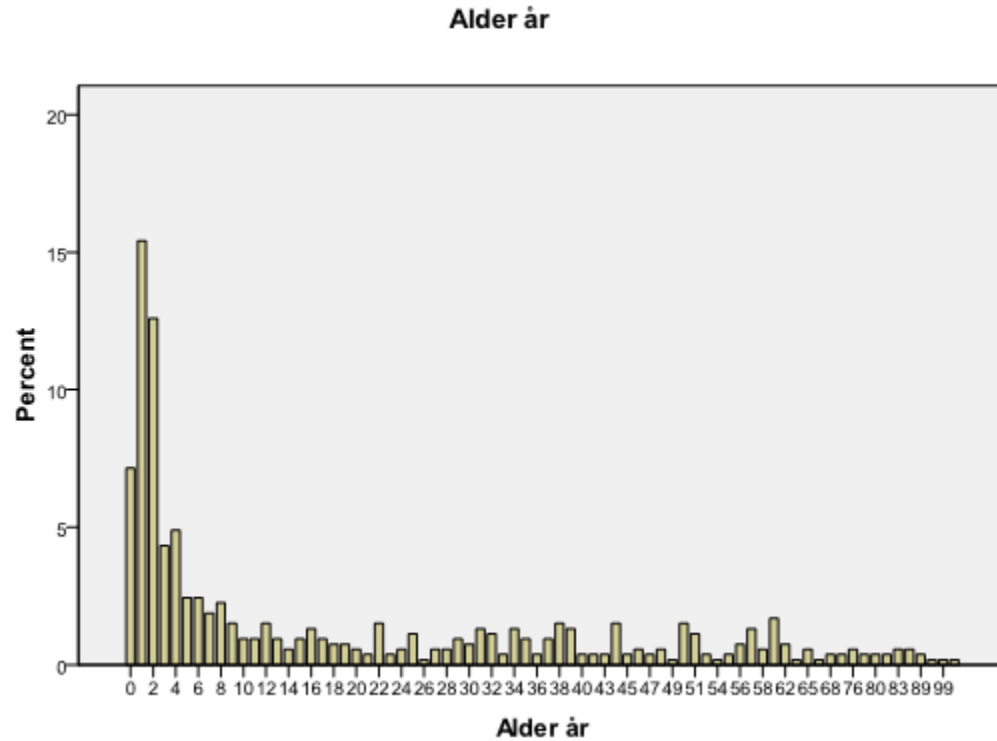


oversigt over alders fordelingen

	Antal	Midl alder (år)	Min - Max (år)
Dyrknings positive	532	19,2	0 - 99
Serologisk positive	2025	43,18	0 - 92
Serologiske pos og neg	22917	40,82	0 - 105

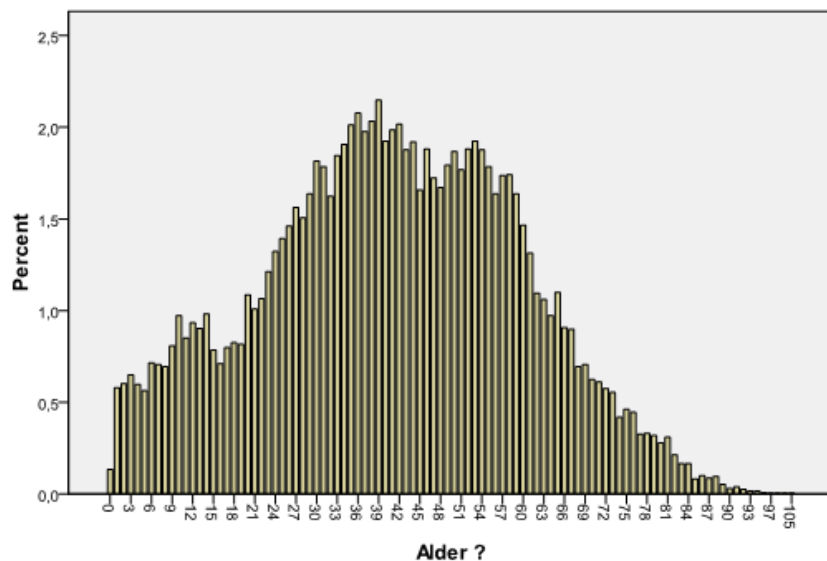


ALDERSFORDELING VED POS DYRKNING

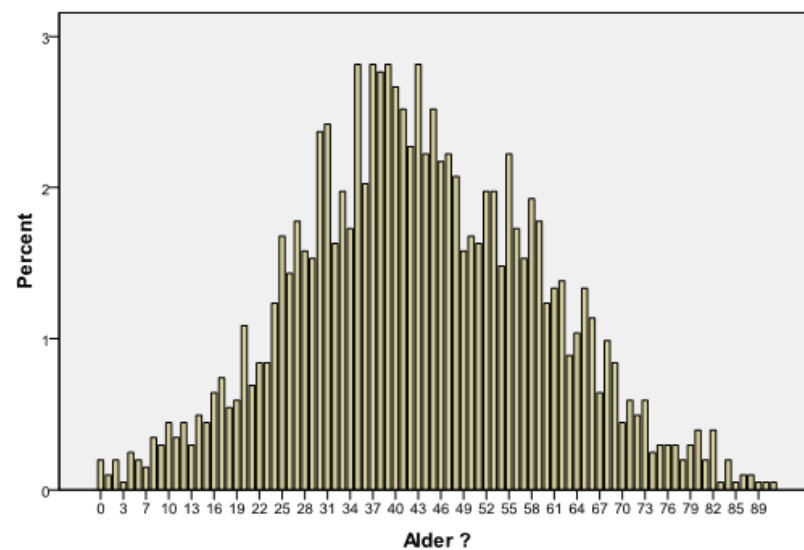


ALDERSFORDELING VED POS SEROLOGI

Alder_Y. enterocolita_Serologi



Alder_Y.entrocolita_serologisk_positiv



SEROLOGISKE POSITIVE IGÉR

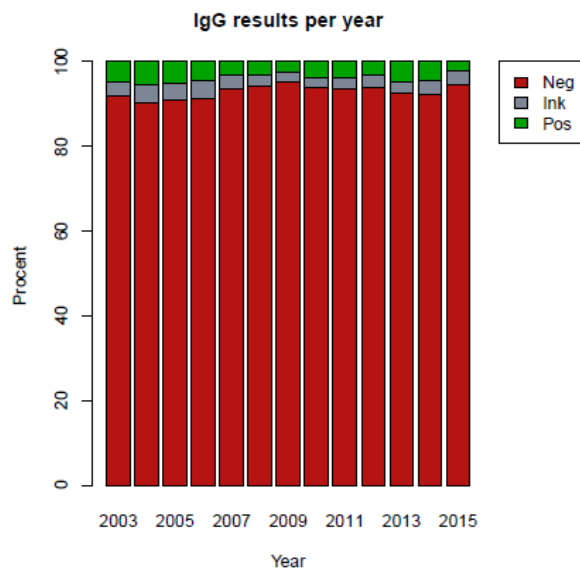


Figure 3: Distribution of IgG results per year

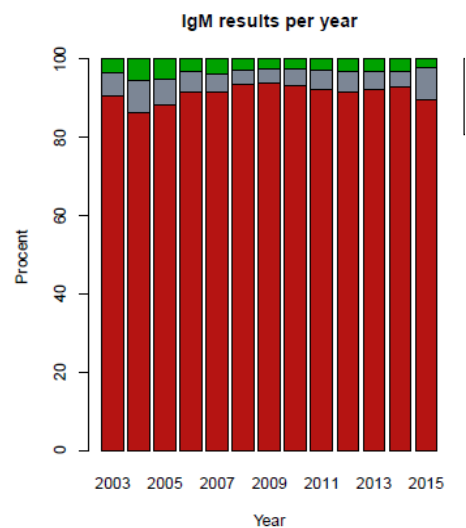


Figure 4: Distribution of IgM results per year

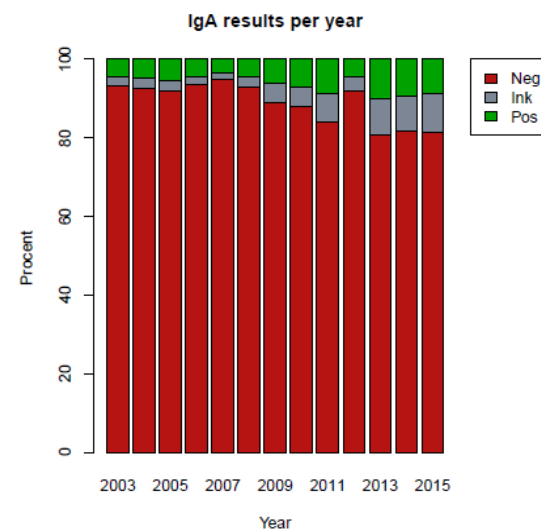
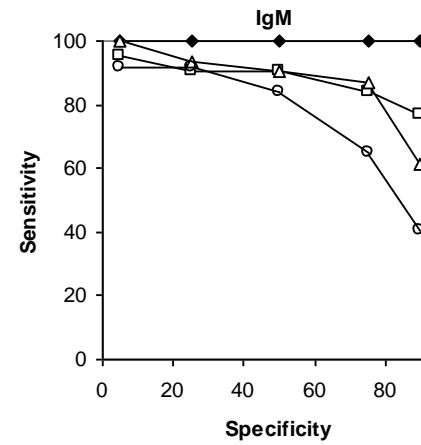
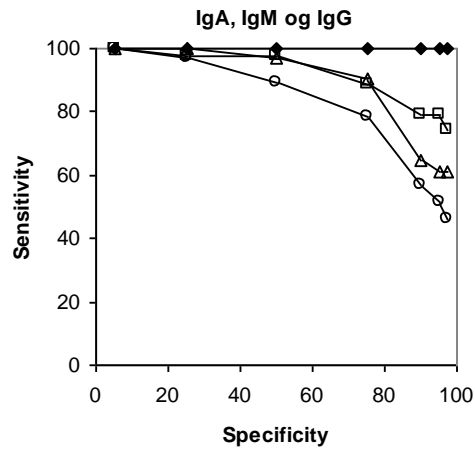


Figure 5: Distribution of IgA results per year

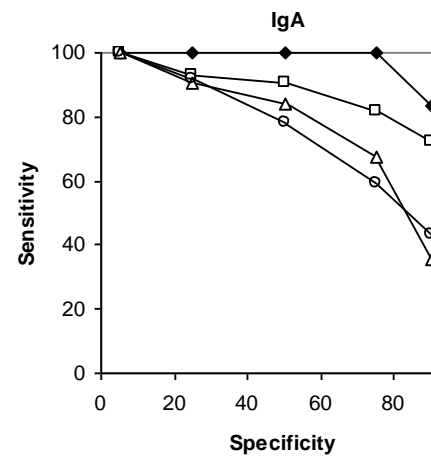
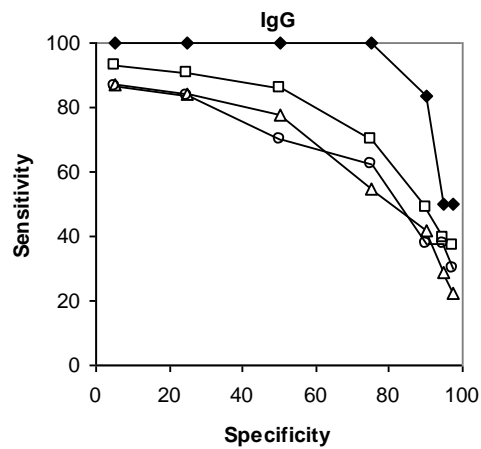
TAK

til Bjørn Kantsø og Charlotte S Jørgensen





2



4

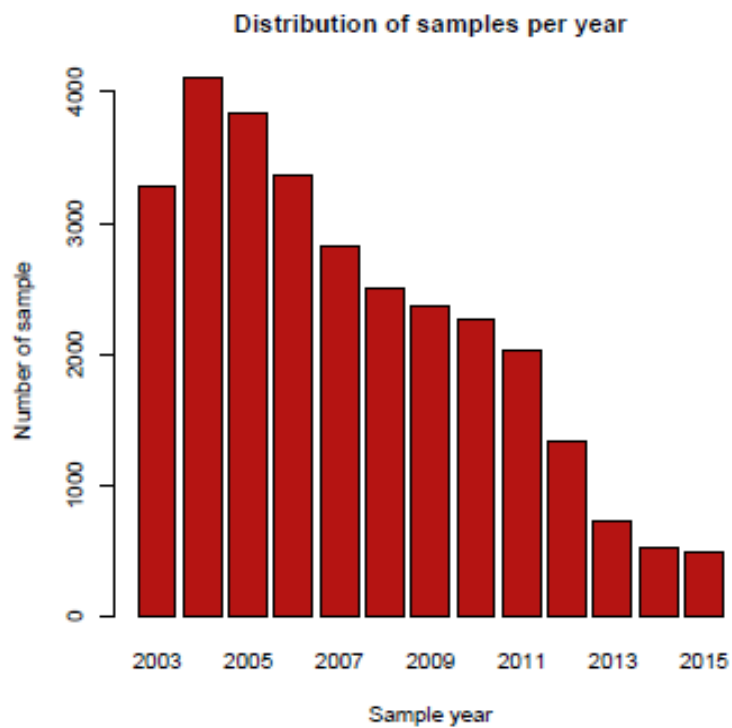


Figure 1: Distribution of samples per year.